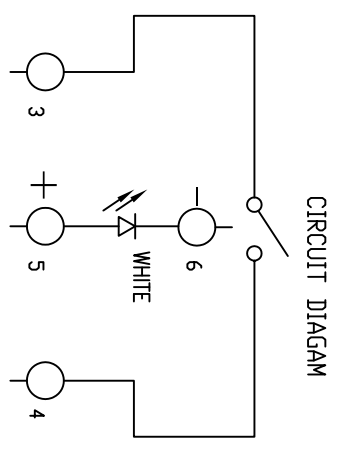
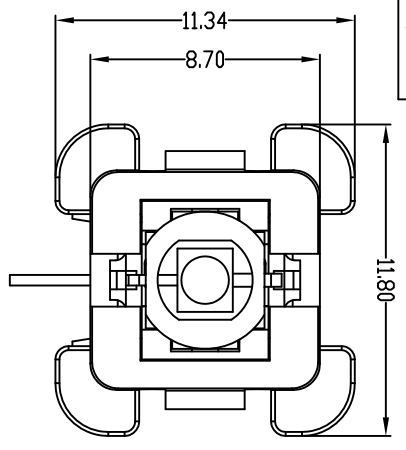
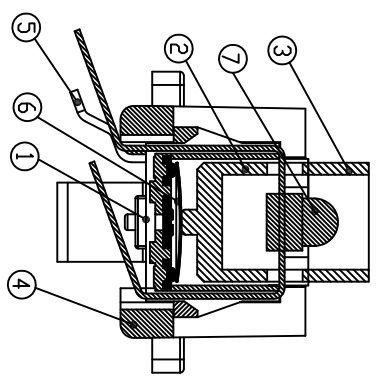
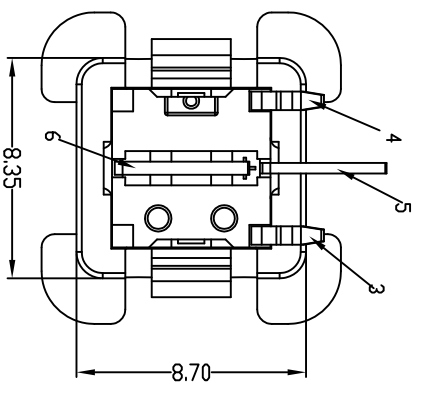
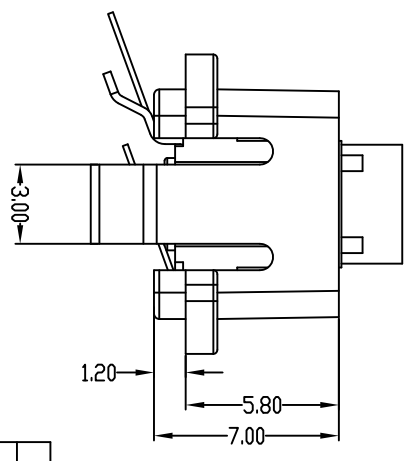
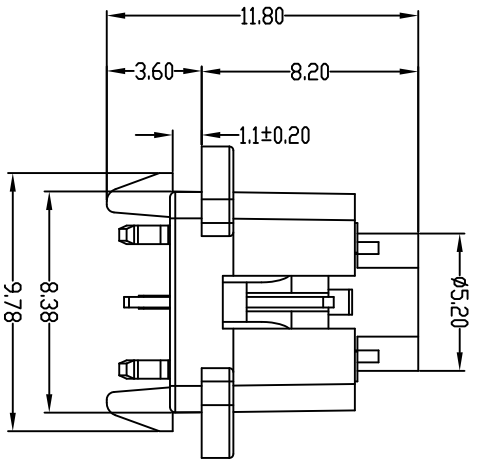


ROHS compliant



CIRCUIT DIAGRAM



SWITCH SPECIFICATION:

1. Rating SWITCH: DC 12V 50mA
2. Contact Resistance: 100mΩ Max.
3. Insulation Resistance: 100MΩ Min.
4. Dielectric Strength: AC 250V(50~60Hz) for 1 minute
5. Operation Force: 150±50gf
6. LIFE TEST: 100,000 CYCLES
7. TOTAL: 0.25±0.1mm

Ordering Information:

SH02E-007 I K X X - X - X - XX

Housing Material: I:PA10T  
 Housing Color: K:BLACK  
 PLATING TYPE: K:SLIVER  
 PLATING THICKNESS: B:12 μm  
 T:Gold Flash  
 Pocking: T:Toy  
 LED发光颜色: W:White, AG:Amber, Green  
 接压力: A:150g  
 HF:No Halogen  
 RS:ROHS

7	LED	/	ø1.8MM SUPER WHITE LED	1	/
6	CONTACT	Stainless	PLATING SILVER	1	SUS
5	TERMINAL	Copper alloy	PLATING SILVER	2	C2680
4	HOLDER	PC	/	1	Block
3	TOP KEYSTROKE	POM	/	1	Block
2	BOTTOM KEYSTROKE	POM	/	1	Block
1	HOUSING	PBT	/	1	Block
NO.	NAME	MATERIAL	STANDARD	Plated	Q'TY NOTE

GENERAL TOLERANCES (UNLESS SPECIFIED)		SCALE: 1:1	NUMBER:
MM	±0.50	DESIGN BY	李玉娜
.XX	±0.25	DRAWN BY	李玉娜
.XXX	±0.13	CHECKED BY DATE	李玉娜 2016.10.25
ANGULAR ±3°		APPROVED BY DATE	

DRAFT WHERE APPLICABLE MUST REMAIN WITHIN DIMENSIONS		THIRD ANGLE PROJECTION	
PART NO. SH02E-007KX-14F-44V		REVISE ON CAD ONLY	
SHEET NO. 1/1		SHEET NO. 1/1	

深圳市瀚云通科技有限公司  
 SHENZHEN HANYUNTING TECHNOLOGY LIMITED  
 NAME: 单色(LED White) 斜70度 2P SWITCH

REV	DESCRIPTION	ECN NO.	DATE
AA	原始图档		2016.10.25